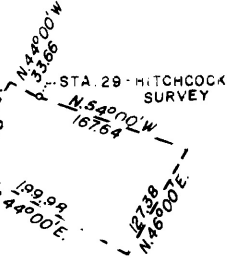


T 6N-R 10W
Sec. 13

57-015
57-016
57-017



ENLARGED DETAIL
1" = 200'

REVISED
06-02-87=17



Traverse from Record of
Survey for Heirs of
Hollis Hitchcock

4-5	S.87°30'E.	257.40
5-6	N.66°45'E.	413.82
6-7	S.88°15'E.	363.66
7-8	N.43°30'E.	91.08
8-9	N.79°00'E.	60.06
9-10	N.50°30'E.	246.84
10-11	N.74°30'E.	140.88
11-12	S.48°00'E.	46.20
12-13	N.67°45'E.	89.10
13-14	N.52°15'E.	609.18
14-15	S.88°30'E.	320.10
15-16	N.75°00'E.	180.18
16-17	N.62°00'E.	141.24
17-18	N.74°15'E.	153.12
18-19	N.61°30'E.	227.70
19-20	N.78°00'E.	82.50
20-21	S.62°15'E.	324.72
21-22	S.69°00'E.	417.78
22-23	N.88°30'E.	476.52
23-24	S.70°30'E.	704.88
24-25	S.59°00'E.	205.92
25-26	S.61°30'E.	234.96
26-27	S.79°15'E.	382.80
27-28	S.20°00'E.	58.40
28-29	S.44°00'E.	639.54
29-30	S.68°30'E.	153.12
30-31	S.34°00'E.	689.70
31-32	S.34°00'E.	201.30
32-33	S.28°17'E.	349.14
33-34	S.19°37'E.	224.40
34-35	S.16°00'E.	774.84
35-36	S.12°03'E.	298.98
36-37	S.4°39'E.	299.64
37-38	S.3°16'W.	298.98
38-39	S.6°50'W.	658.68
39-40	S.6°50'W.	529.32
40-41	S.8°42'W.	147.18
41-42	S.14°06'W.	63.36
42-43	S.18°20'W.	132.0
43-44	S.24°35'W.	132.0
44-45	S.30°50'W.	132.0
45-46	S.36°50'W.	132.0
46-47	S.42°50'W.	132.0
47-48	S.48°05'W.	132.0
48-49	S.53°20'W.	203.28
49-50	S.53°20'W.	127.38
50-51	S.51°06'W.	198.66
51-52	S.44°30'W.	368.84
52-53	S.38°00'W.	299.64
53-54	S.32°00'W.	299.64
54-55	S.25°00'W.	399.30
31-A	N.56°00'E.	62.04

REVISED
2-28-74